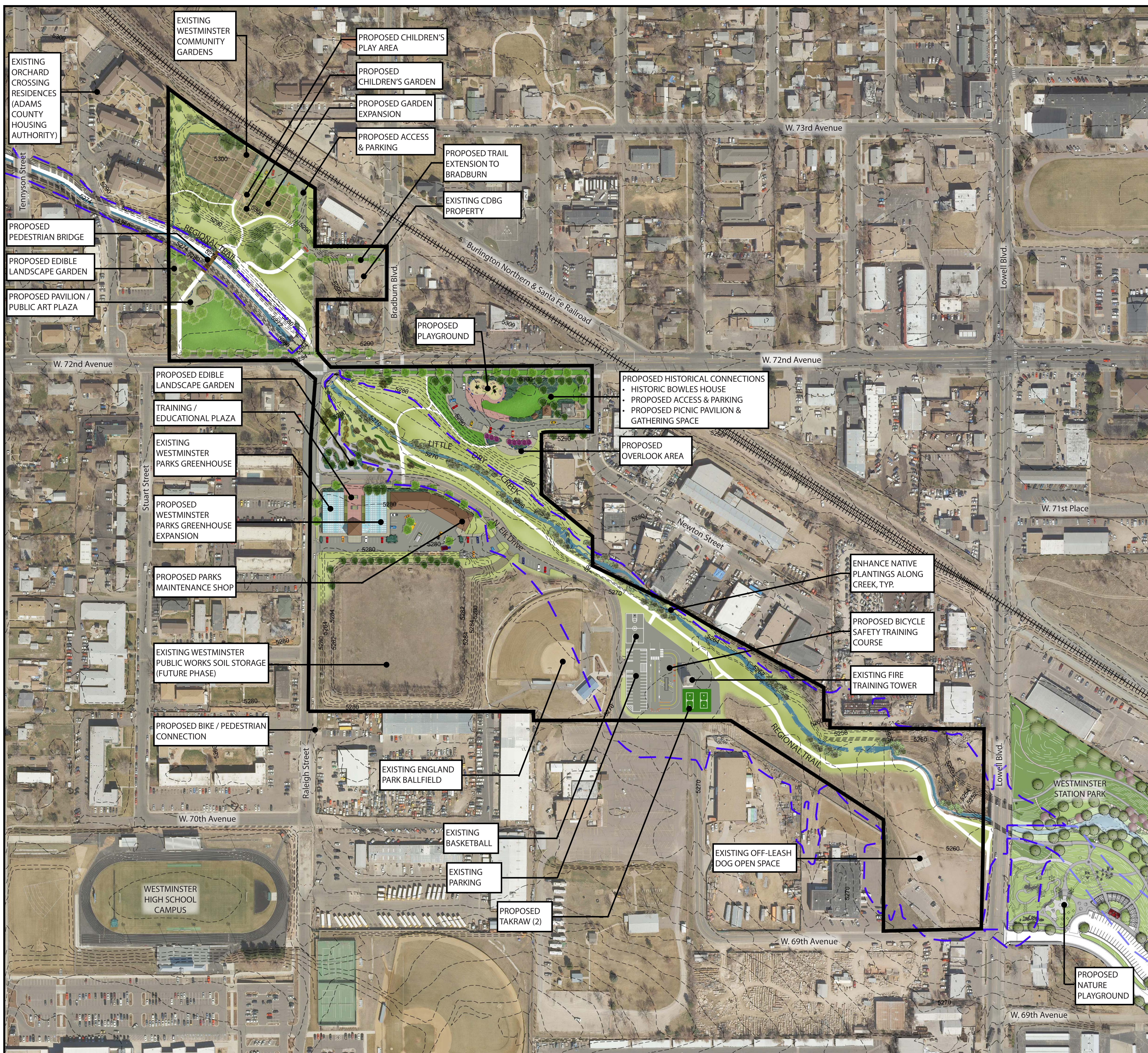

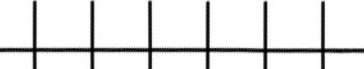







# Master Plan



## LEGEND

-  Project Boundary
-  Railroad Tracks
-  Trail
-  Existing 2' Contours
-  Little Dry Creek
-  100-Year (1%) FEMA Flood Limit Line - Zone A
-  100-Year (1%) FEMA Flood Limit Line - Zone AE

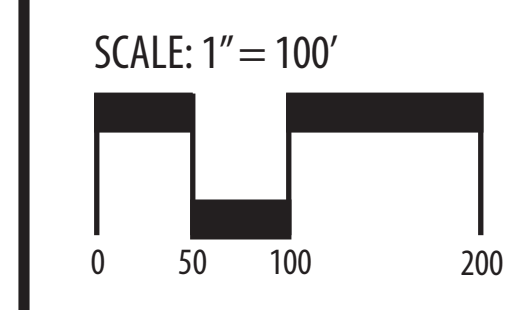
# England Park Corridor Master Plan

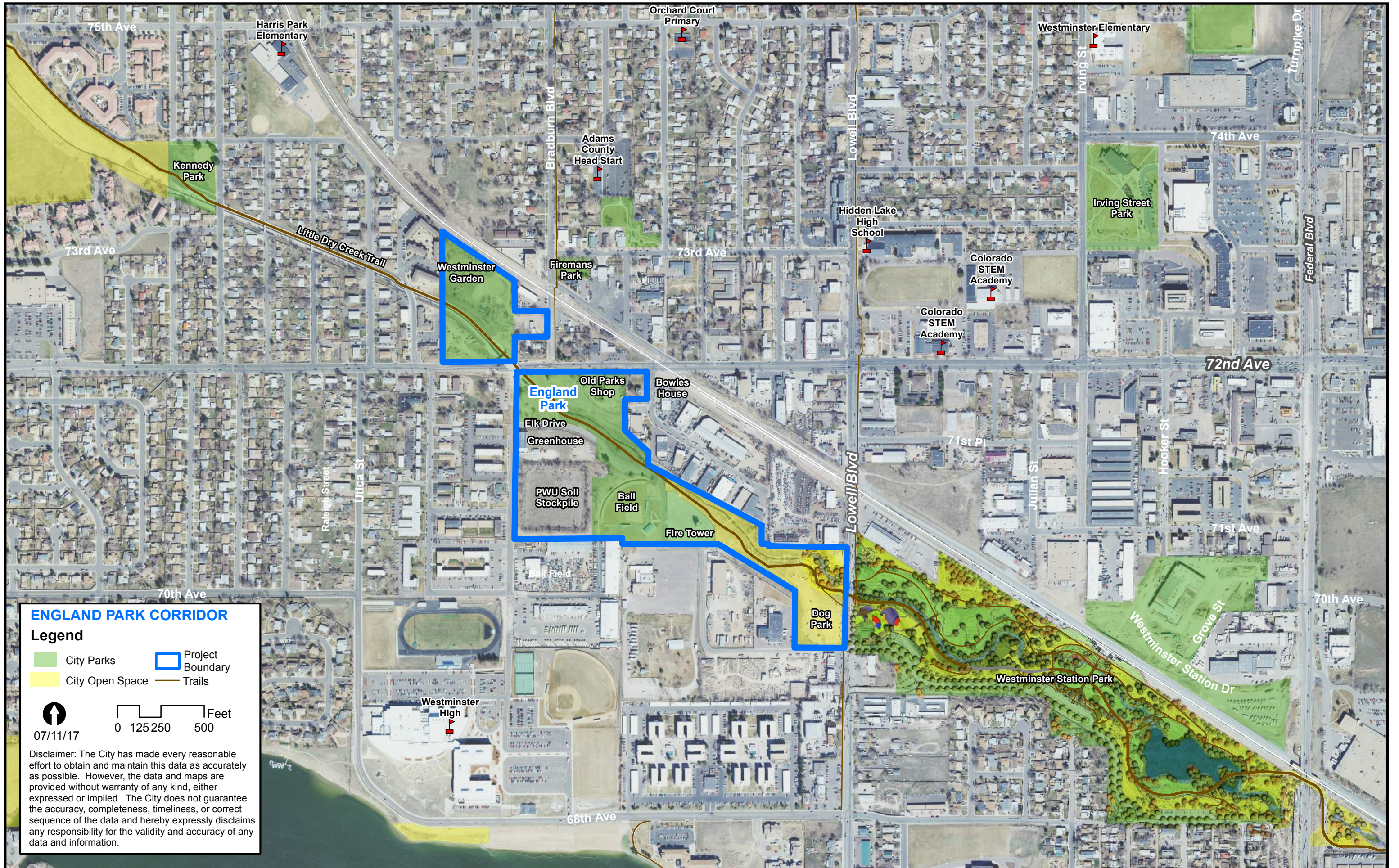
## Westminster, Colorado

June 14, 2017



R:\17440.009 (INSPIRE Grant Assistance)\Graphic Design\Products\England Park Base\England Park Base.indd  
 Project No. 17440.009  
 NOT FOR CONSTRUCTION.  
 FOR ILLUSTRATIVE PURPOSES ONLY.





**ENGLAND PARK CORRIDOR**

**Legend**

- City Parks
- City Open Space
- Project Boundary
- Trails

↑ 07/11/17
 

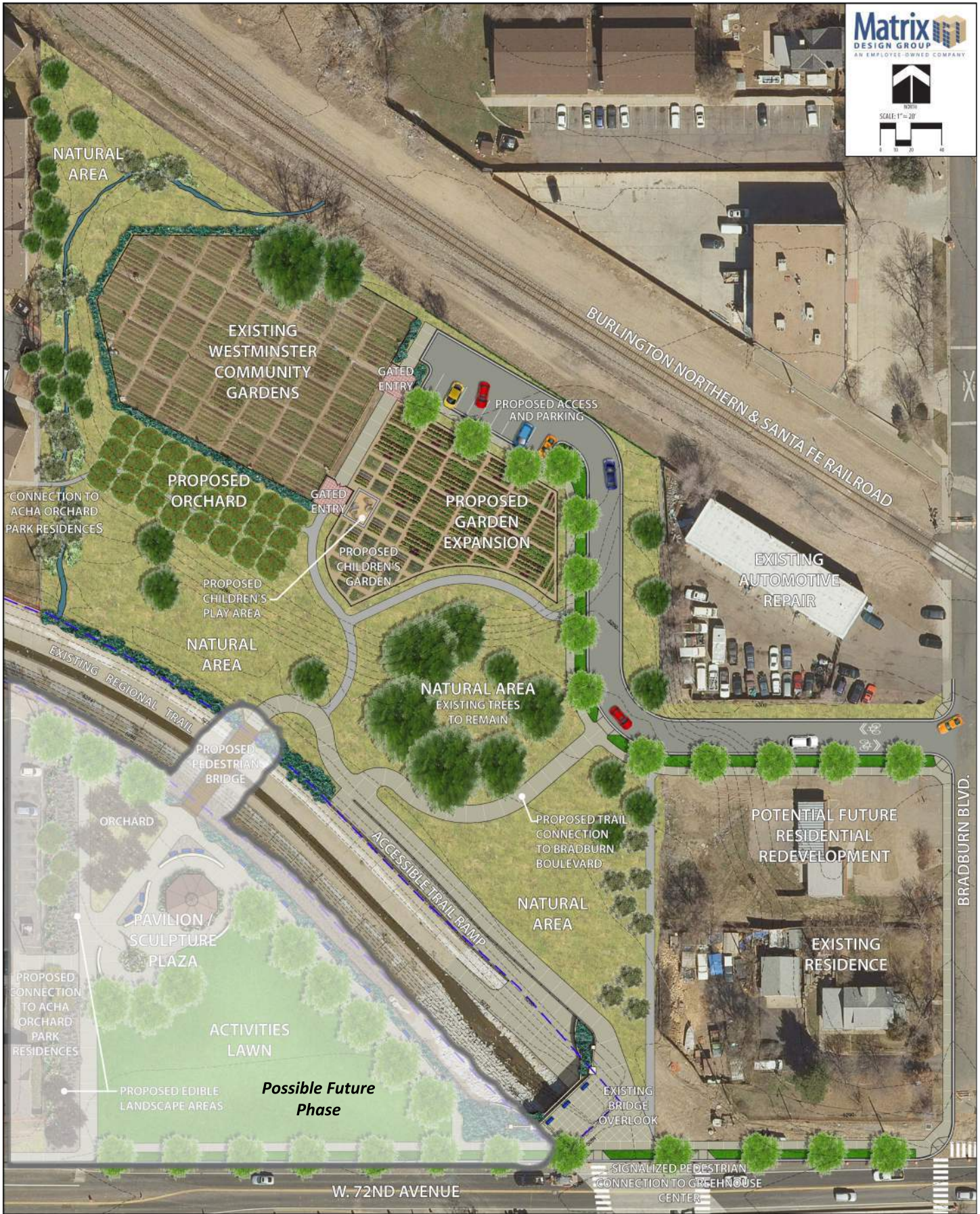






Feet  
0 125 250 500

Disclaimer: The City has made every reasonable effort to obtain and maintain this data as accurately as possible. However, the data and maps are provided without warranty of any kind, either expressed or implied. The City does not guarantee the accuracy, completeness, timeliness, or correct sequence of the data and hereby expressly disclaims any responsibility for the validity and accuracy of any data and information.



# England Park Corridor Master Plan

## Westminster, Colorado

# Westminster Community Garden

Northeast View

Legend

**EXISTING**



**PROPOSED**

\*Note: The rendering shows the long-term vision. Some proposed amenities are not included in the GOCO Inspire grant.



**Matrix**  
 DESIGN GROUP  
 AN EMPLOYEE-OWNED COMPANY

North  
 SCALE: 1" = 20'

# England Park Corridor Master Plan

## Westminster, Colorado



# England Park Greenhouse and Heritage Area

NE Oblique

Legend



\*Note: The rendering shows the long-term vision. Some proposed amenities are not included in the GOCO Inspire grant.



**Matrix**  
 DESIGN GROUP  
 AN EMPLOYEE-OWNED COMPANY

↑  
 NORTH

SCALE: 1" = 20'

0 10 20 40

# England Park Corridor Master Plan

## Westminster, Colorado



# England Park/Della Villa Corridor

Northwest Oblique 2

Legend



**EXISTING**



**PROPOSED**

\*Note: The rendering shows the long-term vision. Some proposed amenities are not included in the GOCO Inspire grant.